

Planning Division Fees*

Building Inspections Division Fees*



City of Wilmer
Serving Our Community

Wilmer Development Process

- Standard Application Fees:**
- General Zoning/Rezoning** \$400.00 +direct costs of notices, advertisement, legal and consultant fees.
- Conditional Use Permit (CUP)** \$300.00 +direct costs of notices, advertisement, legal and consultant fees.
- Site Plan** \$150.00+\$400/ per acre, plus direct costs of notices, advertisement, legal and consultant fees.
- Plat Application Fees:**
- Res. Preliminary Plat without streets** \$400.00 + 15.00 per lot plus direct costs.
- Res. Final Plat without streets** \$600.00 + 20.00 per lot plus direct costs.
- Res. Preliminary Plat with streets** \$600.00 + 15.00 per lot plus direct costs.
- Res. Final Plat with streets** \$800.00 + 20.00 per lot plus direct costs.
- Com. Preliminary Plat**
- Without streets \$400.00 +100.00 per acre plus direct costs.
- Com. Preliminary Plat**
- With streets \$600.00 +100.00 per acre plus direct costs.
- Com. Final Plat**
- Without streets \$600.00 +150.00 per acre plus direct costs
- Com. Final Plat**
- With streets \$800.00 + 150.00 per acre plus direct costs.
- Replat Fee \$600.00** + \$20.00 per lot plus direct costs

- Residential Building Fees:**
- \$750.00 minimum
- 2501 to 10,000 sq ft \$200.00 +.08 sq ft
- 10,000 sq ft or more \$500.00 + .07 sq ft
- Commercial Building Fees:**
- Commercial Building Permit
- Dependent on Construction Valuation
- Other Fees:**
- Certificate of Occupancy \$100.00

- Building Codes:**
- 2015 IBC 2015 IMC
- 2015 IPC 2015 IFC
- 2014 NEC 2015 ECC
- 2015 IRC



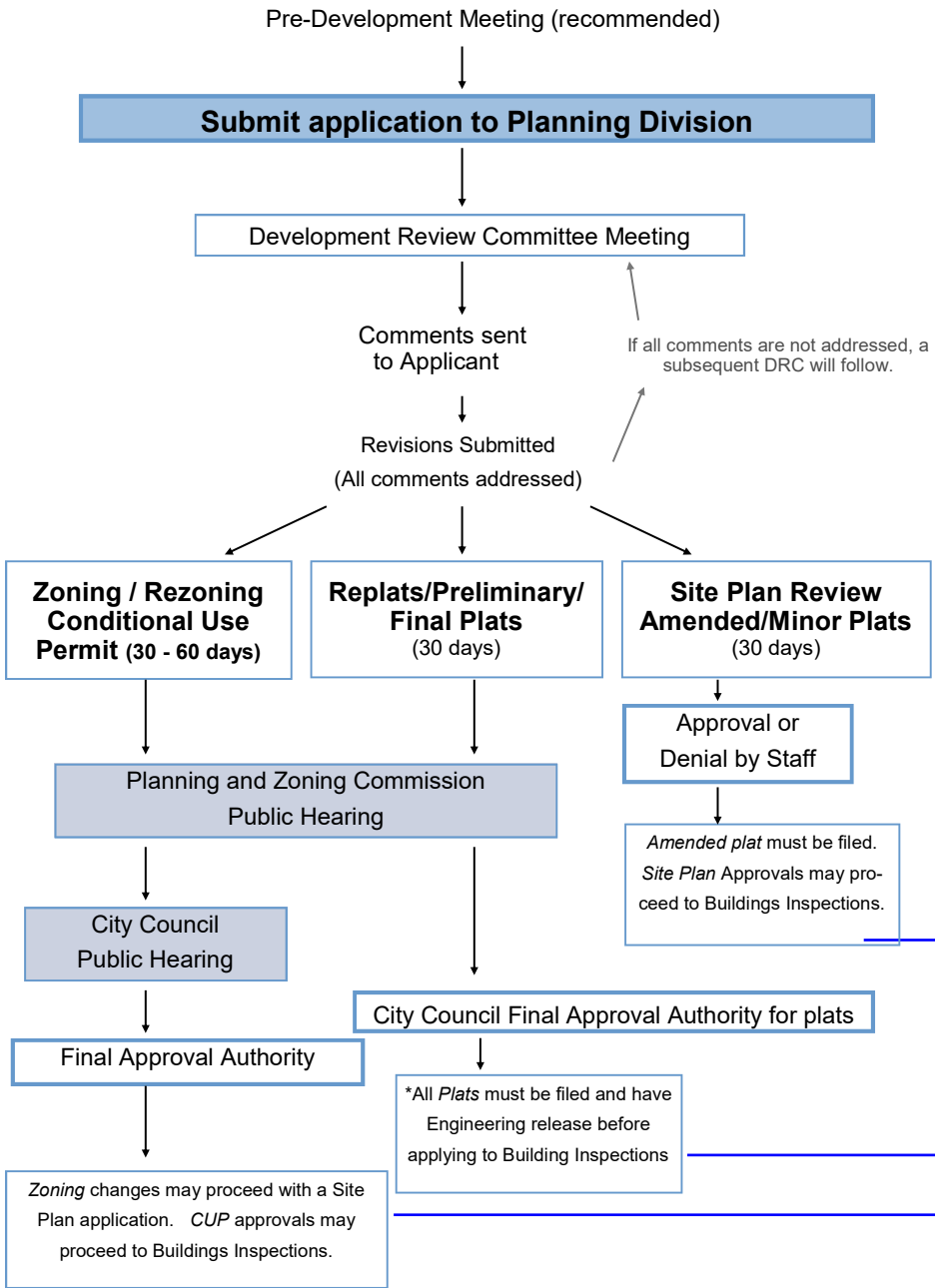
CITY OF WILMER

Consultant Fee- Required to review any of the above (\$200 Paid in advance) Applicable whenever an outside consultant is used by the City 100% of Hourly Rate of Consultant

128 N Dallas Ave
 Wilmer, TX 75172

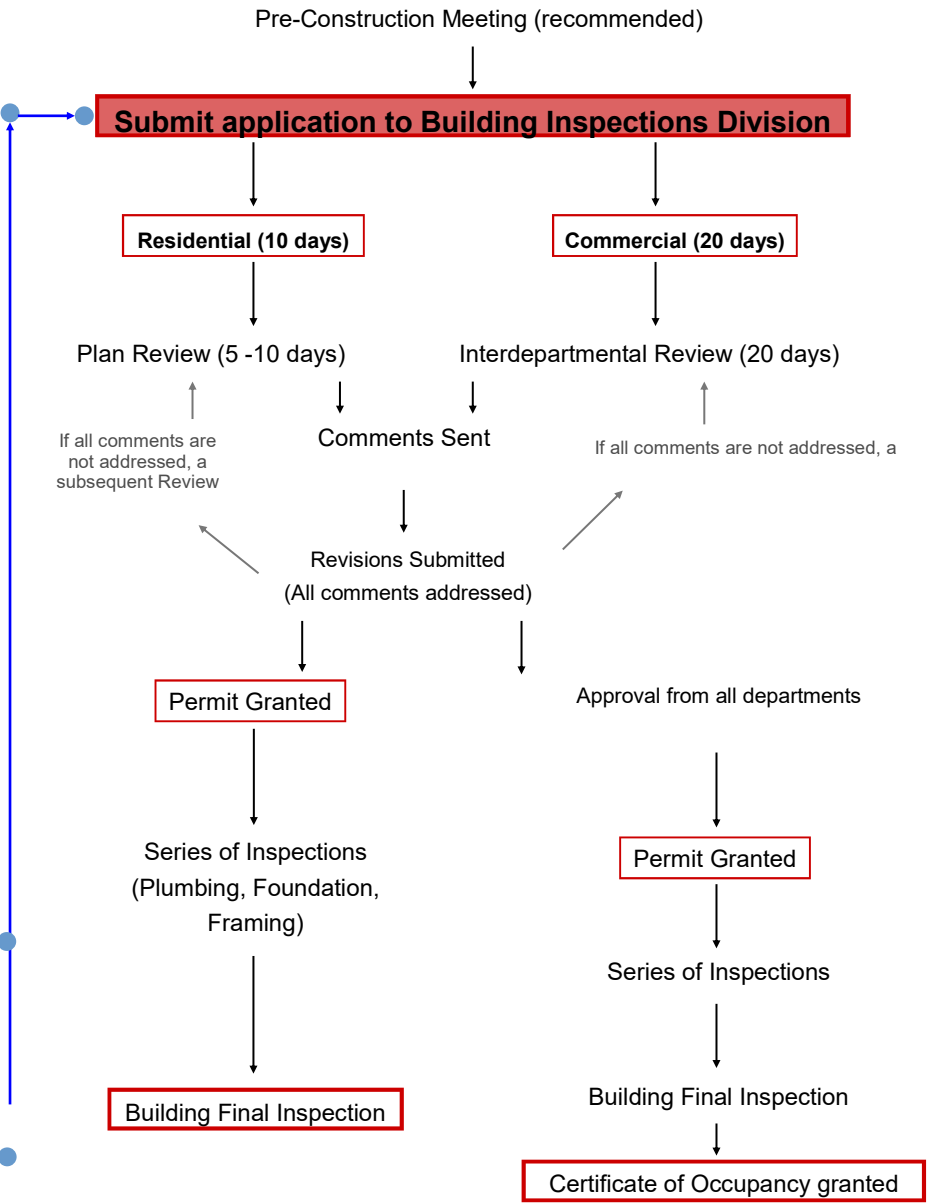
Phone: 972-441-6373
 Fax: 972-441-3061

Planning Division Process*



*Subdivision Plats

Building Inspections Division Process*



*The illustration depicts The City of Wilmer's application process. The illustration and fees included are not meant to be all encompassing, and are subject to change at any time.